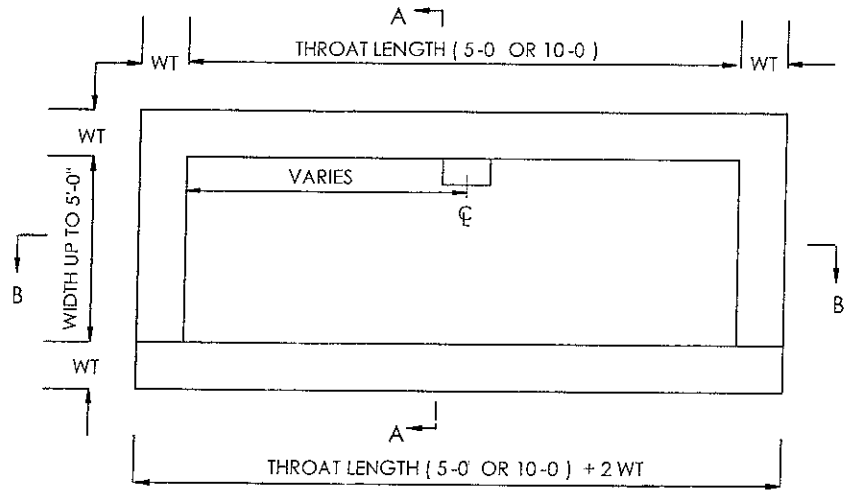
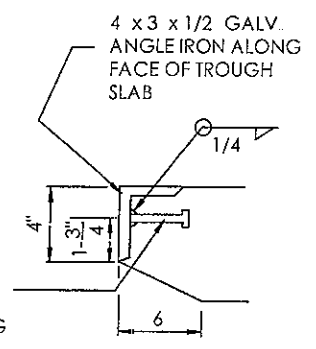


PLAN TOP SLAB

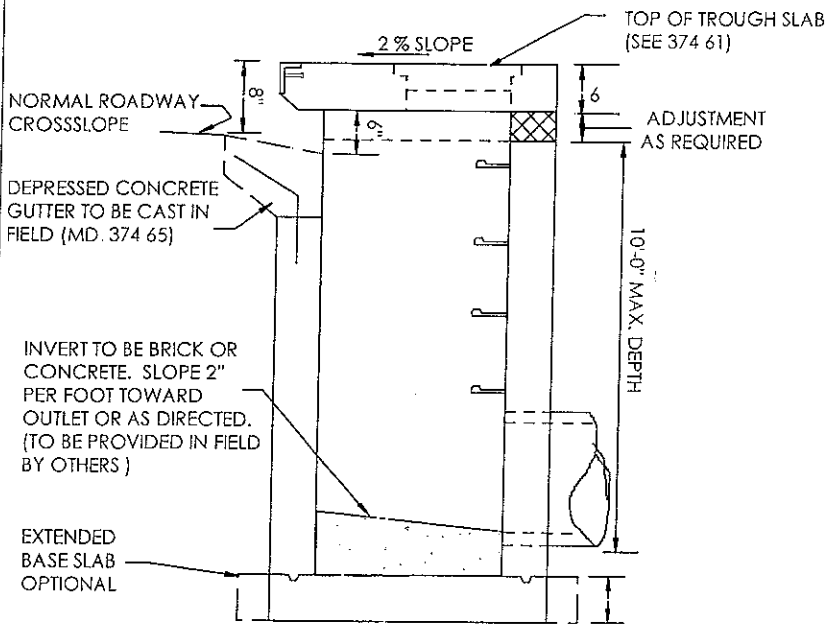
- NOTES:
1. CONCRETE SHALL BE MIX NO. 6 (4500 PSI @ 28 DAYS)
 2. REINFORCEMENT:
 - A. 2 LAYERS OF 4X4-W4.0X4.0 OR # 4 REBAR @ 6 C.C.E.W
 - B. WWF PER ASTM A 185.
 - C. REBAR PER ASTM A 615.
 3. LIFT HOOKS, HOLES, INSERTS PROVIDED FOR HANDLING AT MANUFACTURER'S OPTION.
 4. GRADE AND SLOPE ADJUSTMENT COMPLETED IN THE FIELD BY OTHERS
 5. PIPE OPENINGS TO BE PROVIDED AS REQUIRED FOR SIZE, LOCATION AND INVERT. FOR ELEVATIONS. REFER TO CONSTRUCTION PLANS
 6. STEPS PROVIDED FOR ACCESS (IF REQUIRED).
 7. MANUFACTURER'S NAME AND DATE TO BE PAINTED ON INSIDE OF STRUCTURE.
 8. MONOLITHIC BASE SLAB OPTIONAL.
 9. MINIMUM DEPTH PAYMENT PER 'EACH' INCLUDES DEPTHS UP TO 3'-6". VERTICAL DEPTH PAYMENT PER LINEAR FOOT FOR DEPTHS IN EXCESS OF 3'-6".



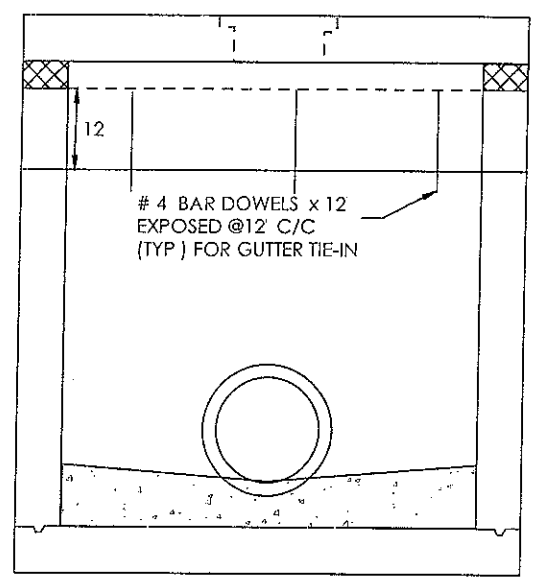
PLAN W/O TOP SLAB



SECTION C-C
(THROUGH TOP SLAB ONLY)



SECTION A-A

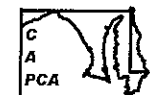


SECTION B-B

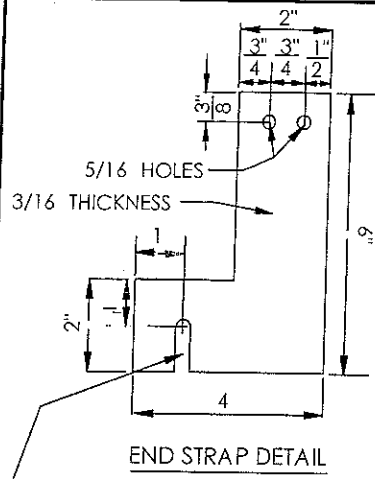
PRECAST SUBSTITUTE FOR SHALLOW COG / COS INLET
STANDARD NO. 374.66, 374.67

10 / 20 / 09
DRAWING # PRE ASSOC A-BOX
NOT TO SCALE

CENTRAL ATLANTIC PRECAST CONCRETE ASSOCIATION



Precast - The Dependable Choice



END STRAP DETAIL

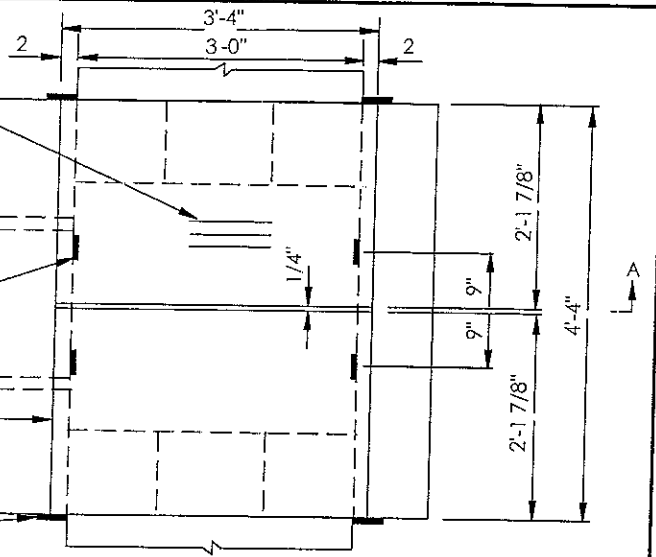
9/16 SLOTTED HOLE TO RECEIVE 1/2" x 4 MACHINE BOLT (GALV.) IMBEDDED 3' IN CONCRETE WALL. NUT TO BE PLACED ON END OF BOLT AFTER GRATE IS INSTALLED

LONGITUDINAL DIRECTION OF GRATING

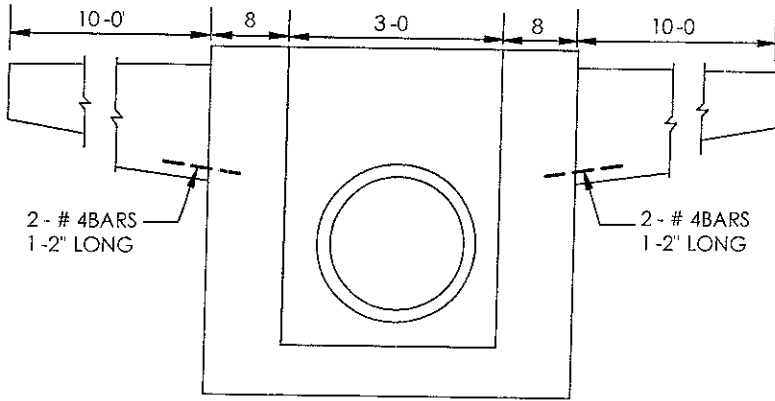
4 ANGLE CLIPS 5/2" x 2" x 3/16" x 2-1/2" WELDED TO BOTTOM OF GRATING

END OR BINDING BARS

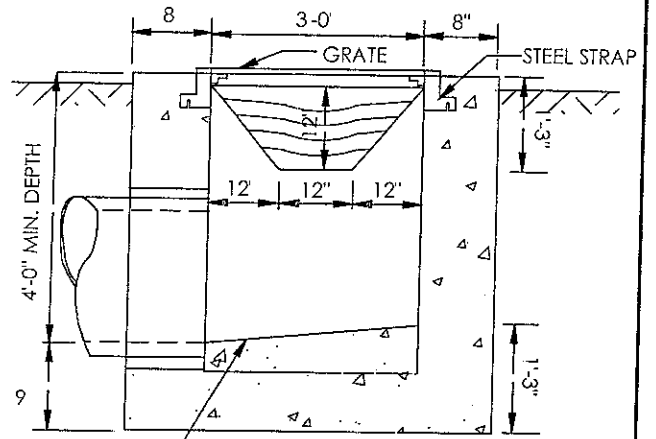
4 ANGULAR STEEL STRAPS BOLTED TO OUTSIDE BARS OF GRATING PRIOR TO SHIPPING



PLAN

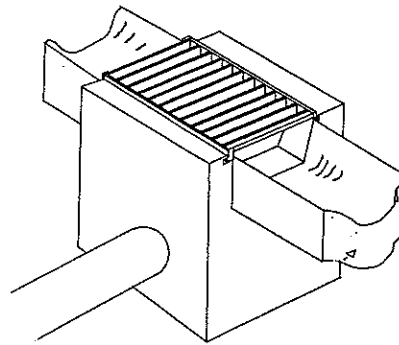


ELEVATION



INVERT TO BE CONCRETE OR BRICK. SLOPE 2" PER FOOT TOWARD OUTLET OR AS DIRECTED. (TO BE PROVIDED IN FIELD)

SECTION A-A



ISOMETRIC VIEW

NOTES:

1. CONCRETE SHALL BE MIX NO. 6 (4500 PSI @ 28 DAYS).
2. REINFORCEMENT:
 - A. 2 LAYERS OF 4X4-W4.0X4.0 OR # 4 REBAR @ 6" C.C.E.W
 - B. WWF PER ASTM A 185.
 - C. REBAR PER ASTM A 615.
3. LIFT HOOKS, HOLES, INSERTS PROVIDED FOR HANDLING AT MANUFACTURER'S OPTION.
4. GRADE AND SLOPE ADJUSTMENT COMPLETED IN THE FIELD BY OTHERS
5. PIPE OPENINGS TO BE PROVIDED AS REQUIRED FOR SIZE, LOCATION AND INVERT. FOR ELEVATIONS, REFER TO CONSTRUCTION PLANS
6. STEPS PROVIDED FOR ACCESS (IF REQUIRED).
7. MANUFACTURER'S NAME AND DATE TO BE PAINTED ON INSIDE OF STRUCTURE.
8. MONOLITHIC BASE SLAB OPTIONAL.

PRECAST TYPE K INLET OPEN END GRATE NON-TRAFFIC AREAS
STANDARD NO. MD-378.03

CENTRAL ATLANTIC PRECAST CONCRETE ASSOCIATION

10 / 20 / 09

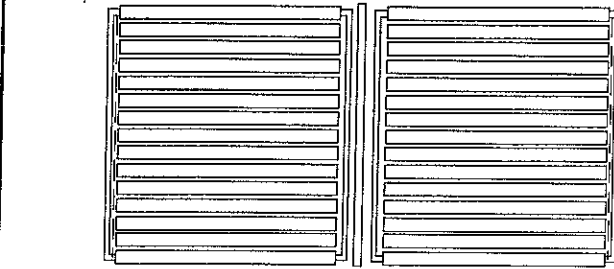
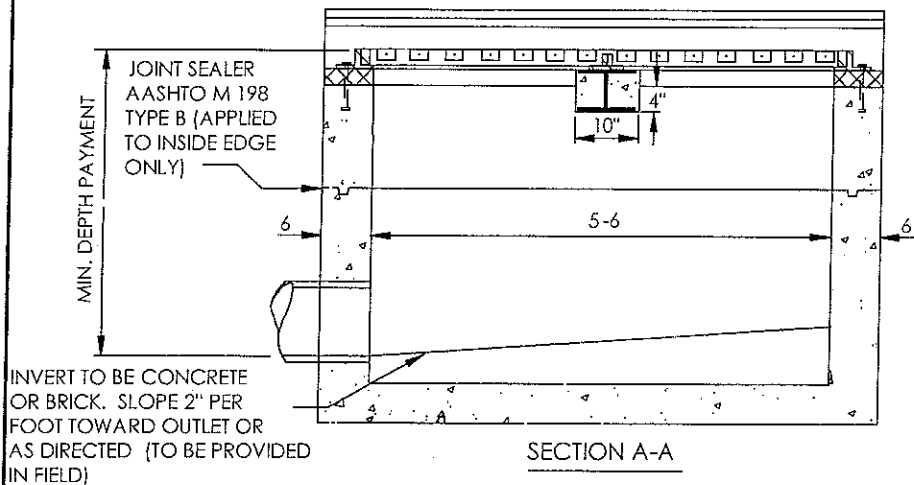
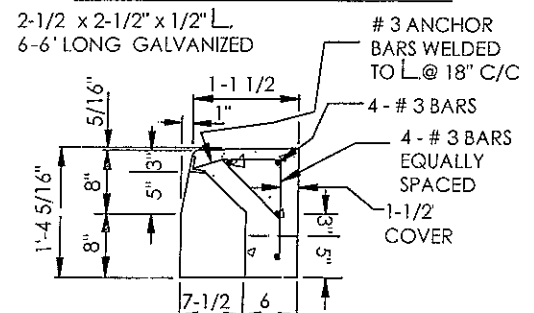
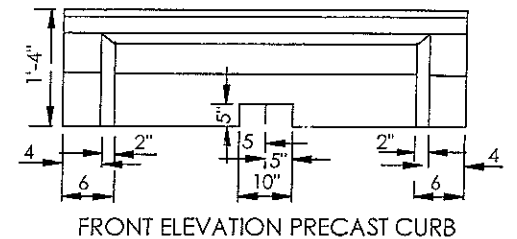
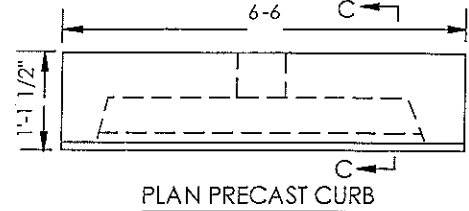
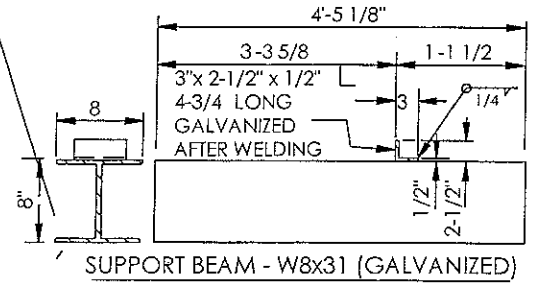
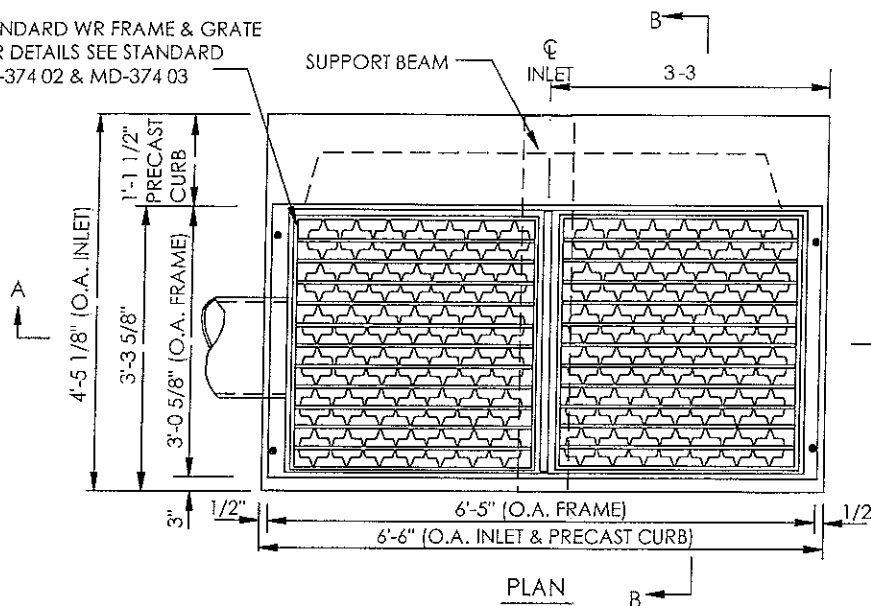
DRAWING # PRE ASSOC STD.OEG-NT

NOT TO SCALE

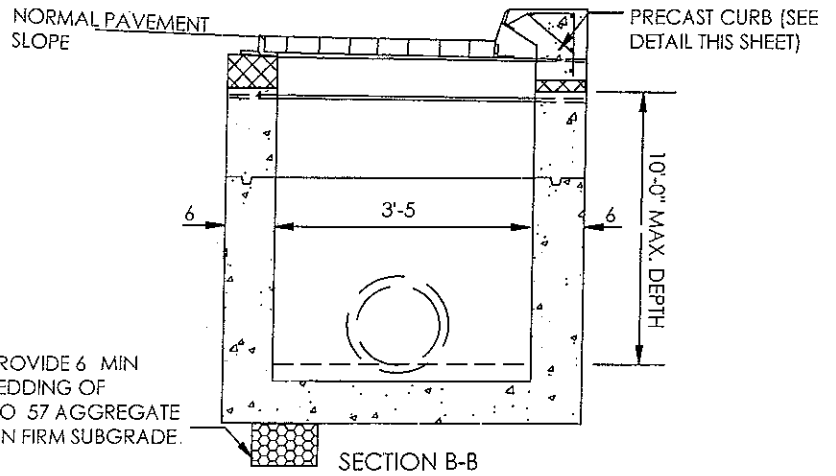


Precast - The Dependable Choice

STANDARD WR FRAME & GRATE
FOR DETAILS SEE STANDARD
MD-374.02 & MD-374.03



STANDARD TYPE 'S' FRAME & GRATE
FOR DETAILS SEE STANDARD MD-379.05



- NOTES:
1. CONCRETE SHALL BE MIX NO. 6. (4500 PSI @ 28 DAYS).
 2. REINFORCEMENT:
 - A. 2 LAYERS OF 4X4-W40X40 OR # 4 REBAR @ 6" C.C.E.W.
 - B. WWF PER ASTM A 185.
 - C. REBAR PER ASTM A 615.
 3. LIFT HOOKS, HOLES, INSERTS PROVIDED FOR HANDLING AT MANUFACTURER'S OPTION.
 4. GRADE AND SLOPE ADJUSTMENT COMPLETED IN THE FIELD BY OTHERS.
 5. PIPE OPENINGS TO BE PROVIDED AS REQUIRED FOR SIZE, LOCATION AND INVERT. FOR ELEVATIONS, REFER TO CONSTRUCTION PLANS.
 6. STEPS PROVIDED FOR ACCESS (IF REQUIRED).
 7. MANUFACTURER'S NAME AND DATE TO BE PAINTED ON INSIDE OF STRUCTURE.
 8. MONOLITHIC BASE SLAB OPTIONAL.

PROVIDE 6 MIN
BEDDING OF
NO 57 AGGREGATE
ON FIRM SUBGRADE.

9. MINIMUM DEPTH PAYMENT PER EACH INCLUDES DEPTHS UP TO 3'-6". VERTICAL DEPTH PAYMENT PER LINEAR FOOT FOR DEPTHS IN EXCESS OF 3'-6"

PRECAST WR INLET - STANDARD NO. MD-374.21
PRECAST TYPE S COMBINATION INLET DOUBLE GRATE TANDEM - STANDARD NO. MD-374.71

CENTRAL ATLANTIC PRECAST CONCRETE ASSOCIATION



Precast - The Dependable Choice

10/20/09

DRAWING # PRE.ASSOC STD WR-SDGT

NOT TO SCALE